

Want to undertake an asset and software license compliance audit?

Want to make this as simple, and comprehensive as possible?

Incit Technology specialise in applying some of the best and most comprehensive inventory and asset management software available to asset audit projects. By using this and working with you, we can help you quickly and effectively gather a comprehensive accurate asset dataset that you can use in future decision making.

We will not only alleviate the time and cost demands associated with such a project, but will ensure that what you obtain is the most comprehensive and accurate asset dataset possible. Added to this, you can subsequently easily maintain this asset database, by simply continuing to use the implemented software.

The technology employed is proven in both small and large organisations, and the approach is closely aligned to those recommended by relevant bodies and organisations.

Incit Technology Ltd.

Incit Technology Ltd. is an independent consultancy and supplier specialising in Systems Management solutions and services. It's staff has wide-ranging backgrounds in this arena, and have extensive experience in applying state of the art systems management software to real world projects. This enables them to deliver to the highest standards.

INCIT
Technology Ltd.

John Eccles House
Oxford Science Park
Oxford
OX4 4GP

T 01865 338084
F 01865 338100
E info@incit-technology.com
W www.incit-technology.com

INCIT
Technology Ltd.

Let us help you
make your
IT Asset Audit as
quick, accurate
and
comprehensive as
possible



We won't offer you the world

We'll just help you manage yours.

Tracking IT Assets

Keeping track of IT assets is a significant challenge for many organisations. The day to day demands on IT management often means the maintenance of IT asset registers end up being low on the priority list, while constant change, organisational and IT complexity means that significant effort is required to undertake this task.

However having a clear idea of one's IT asset base is becoming increasingly important. Many investment and project decisions require accurate asset information for their justification and execution while it is now up to organisations to be able to prove the legality of their software use.

Some organisations invest considerable time and money in manually gathering an IT asset register. Incit Technology's software based approach is not only quicker and cheaper than such manual methods, but inevitably provides more comprehensive information.

IT Asset and Software Audits

Zero Footprint Inventory Gathering

Automatic collection of detailed Hardware, Software and User data is undertaken without visiting each computer using a zero footprint software approach. Useful 'current state' data is also gathered, while post processing ensures information consistency and the ability to determine such things as which modules of a software suite are installed where.

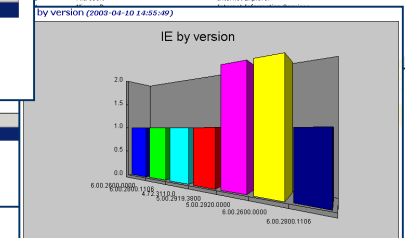
The screenshot shows the 'Edit Computer' page for 'INCIT-COMPAQ1'. It displays various details including:

- Identification:** Machine Name (INCIT-COMPAQ1), Model (EVO N125 UK 470034-215), Date not accessible, Manufacturer (Compaq), Type (Desktop), Serial Number (922JUN2L07R), Asset Tag (From 8100).
- Operating System:** Microsoft Windows XP (0), AMD Athlon MP Processor (Model 6), CPU Speed (1200 MHz).
- Drives:** C: (3.0 InCh floppy Drive), D: (Local Disk (HTFS)), E: (Local Disk (HTFS)), F: (CDROM Drive), G: (Network Connection).
- Network:** Realtek RTL8139 Family PCI Fast Ethernet NIC, MAC Address (00:90:48:17:89), IP Address (194.53.32.100).

Count by OS, processor name, and speed (2003-04-10 14:49:53)

Caption	Processor Name	Processor Speed	Count
Microsoft Windows 2000	Intel Pentium III processor	1300	1
Microsoft Windows 98	AMD Athlon MP Processor (Model 6)	1200	1
Microsoft Windows XP	AMD Athlon MP Processor (Model 6)	1200	1
Microsoft Windows 2000	Intel Pentium III processor	1200	1
Microsoft Windows 2000	Intel Pentium Pro or Pentium II	500	1
Microsoft Windows 2000	Intel Pentium Pro or Pentium II	366	1

Socket	Size	Type
DIMM #1: J10	87h (128 MB - Double Bank)	500h (DIMM, SDRAM)
DIMM #2: J11	7Fh (Not Installed - Single Bank)	500h (DIMM, SDRAM)
DIMM #3: J12	7Fh (Not Installed - Single Bank)	500h (DIMM, SDRAM)



Extensive Reporting

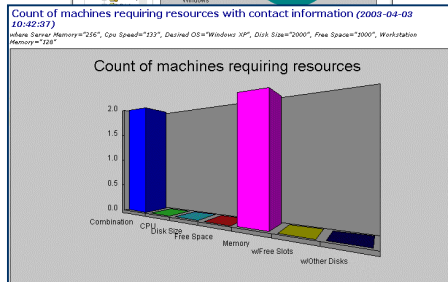
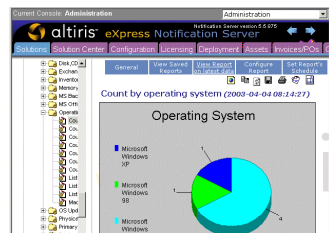
The single asset database also enables additional asset data, that cannot be gathered automatically, to be entered, such as Monitors, Scanners, Routers or contracts, costs and accounting information. Once gathered it becomes a straightforward process to generate those reports that you require...

- Machines by type
- Configuration Information
- OS information
- Those requiring resources for an upgrade
- Disk Space Usage
- Software version analysis
- Cost analysis
- etc., etc.

Software License reconciliation

Software license reconciliation is undertaken by matching, within the database, the automatically gathered installed software to the licenses numbers that have been purchased.

Different licensing models can be accommodated and applied to groups of systems as appropriate.



Full Count of Software Licenses Installed vs. Purchased (2003-04-10 14:52:33) (3 rows)

Name	Product Name	Licenses Installed	Licenses Purchased	Asset ID
Altiris Client Management	Altiris eXpress NS Client	4	130	353
Microsoft Office 2000 Premium	Microsoft Office 2000 Premium	2	45	86
Paint Shop Pro	Paint Shop Pro 7 ESD	1	5	361

Full Count of Software Licenses Installed vs. Purchased (2003-04-10 14:53:07) where Product Name="Altiris eXpress NS Client"

Machine Name	Name	Version	Publisher	Domain	Operating
INCIT-COMPAQ1	Altiris eXpress NS Client		INCITTECHNOLOGY	INCITTECHNOLOGY	Microsoft V
INCIT-LAPTOP2	Altiris eXpress NS Client		INCITTECHNOLOGY	INCITTECHNOLOGY	Microsoft V
ITEXPRESS	Altiris eXpress NS Client		ALTIRIS	ALTIRIS	Microsoft V
S9801	Altiris eXpress NS Client		WORKGROUP	WORKGROUP	Microsoft V

Count of core MS Office components installed (2003-04-10 14:53:07)

Product	# Copies Installed	# Machines
Microsoft Access*	4	4
Microsoft Excel*	4	4
Microsoft FrontPage*	4	4
Microsoft Office*	1	1
Microsoft Outlook*	2	2
Microsoft PowerPoint Viewer for Windows	1	1
Microsoft PowerPoint*	1	1
Microsoft Project*	1	1
Microsoft Word*	4	4

